

1 SLOTS FOR FRAMES
MAST STEP

ASSEMBLE K1, K2 AND K3 OVER PLAN. GLUE BLAND B2 TO EACH SIDE OF BACKBONE IN POSITION INDICATED.

2 TRANSON

GLUE FRAMES TO BACKBONE. GLUE TRANSON ON END OF BACKBONE AND CHECK ALIGNMENT WITH FRAMES.

3 DECK STRINGERS
CHINE STRINGERS

GLUE STRINGERS ON IN PAIRS-ONE ON EACH SIDE-STARTING AT BOW. TRIM OFF FLUSH WITH BACK OF TRANSON.

4 BEFORE PLANKING, SANDPAPER TO SECTIONS SHOWN.

PLANK BIDS AND TRIM OFF EXCESS.

5 RAZOR

PLANK ONE-HALF OF V-BOTTOM AND TRIM OFF EXCESS THEN PLANK OTHER HALF. SANDPAPER HULL SMOOTH.

6 TRAVELER
RING FOR JIBSTAY
RING FOR MAINSTAY

GLUE MAST ASSEMBLY IN PLACE. THEN INSTALL WIRE FITTINGS.

7 SCRAP BALSA FILLER PIECE
LOCATION OF CABIN FORMERS

GLUE DECK IN PLACE AND FILL HOLES AROUND FITTINGS WITH GLUE.

8 TRAVELER
SKYLIGHT
FOREMATCH
COMPAIONWAY
FOREMATCH BOTTOM

GLUE CABIN FORMERS TO DECK. GLUE ON CABIN SIDES AND TOP. ADD DECK FITTINGS.

9 WEIGHT
FIN KEEL
SLOT FOR KEEL

GLUE WEIGHT TO FIN KEEL. ATTACH RUDDER AS SHOWN IN SIDE VIEW. GLUE KEEL IN SLOT.

10 CLOTH
RAZOR BLADE
NEEDLE

DRAW OUTLINE OF SAILS ON CLOTH. CUT OUT SAILS AS SHOWN. PUT THIN COATING OF GLUE ON EDGES OF SAILS. DO THIS ON BOTH SIDES. TAKING MEASUREMENTS FROM PLAN, LAY OUT SAILS ON CLOTH AS SHOWN.

11 MASTHEAD DETAIL
NOTCH
TIED AND GLUED
MAINSAIL
SPREADER
JIBSTAY
JIB

CUT SPARS TO LENGTH AND ATTACH FITTINGS. GLUE 1/16" DOWEL SPREADER TO MAST. LACE MAINSAIL TO MAST AND MOUNT IN BOAT. THEN FINISH RIGGING.

COLOR SCHEME
DECK, MASTS & CABIN - NATURAL WOOD FINISH
HULL ABOVE WATERLINE - WHITE
BELOW WATERLINE - GREEN

FINISHING
SAND HULL SMOOTH AND APPLY SANDING SEALER IF A DURABLE WATER-PROOF FINISH IS DESIRED. SAND BETWEEN COATS. DRAW ON WATERLINE AS SHOWN AT RIGHT. PAINT MODEL ACCORDING TO COLOR SCHEME.

DRAWING WATERLINE

LEFT SIDE PLANK
RIGHT SIDE PLANK
TOP
BOTTOM

REFER TO THIS LAYOUT TO IDENTIFY DIE-CUT PARTS

MAST PARTNER DETAIL
P1
P2
M1
P3
P4
M2

TRAVELER DETAIL
SIDE
FRONT
WIRE - MAKE 2

COMPANIONWAY DETAIL
SIDE
FRONT

SKYLIGHT DETAIL
CELLULOID
THREAD AND GLUE

NOTE: ASSEMBLE COMPANIONWAY ON CABIN

NOTE: THIS FITTING OPTIONAL. WITH IT, THE MAST CAN BE MADE REMOVABLE.

WIRE

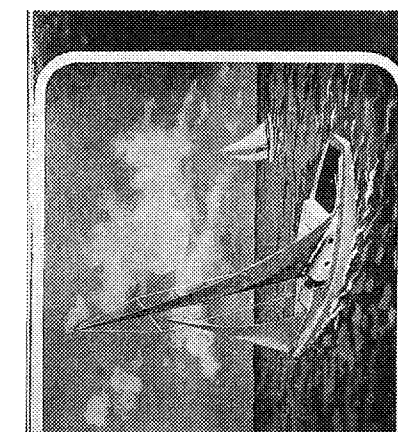
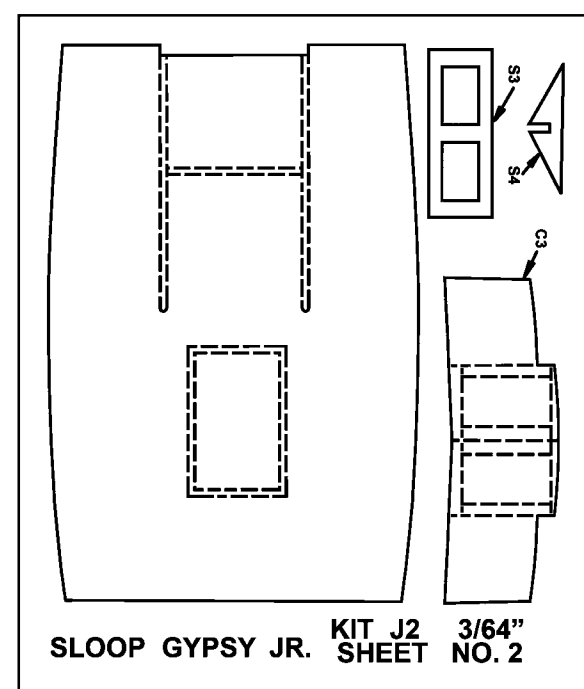
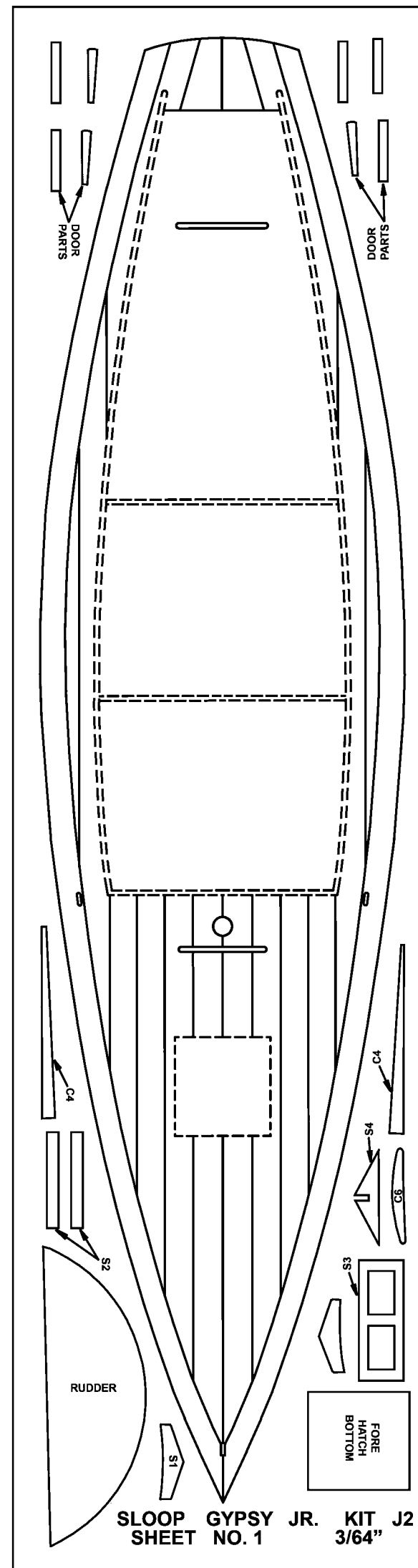
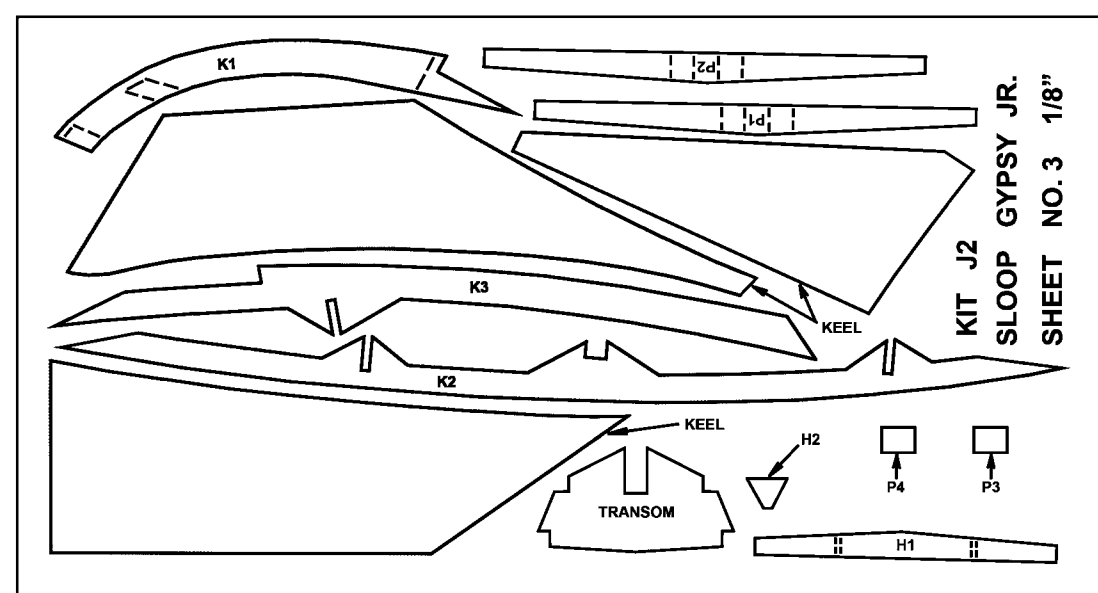
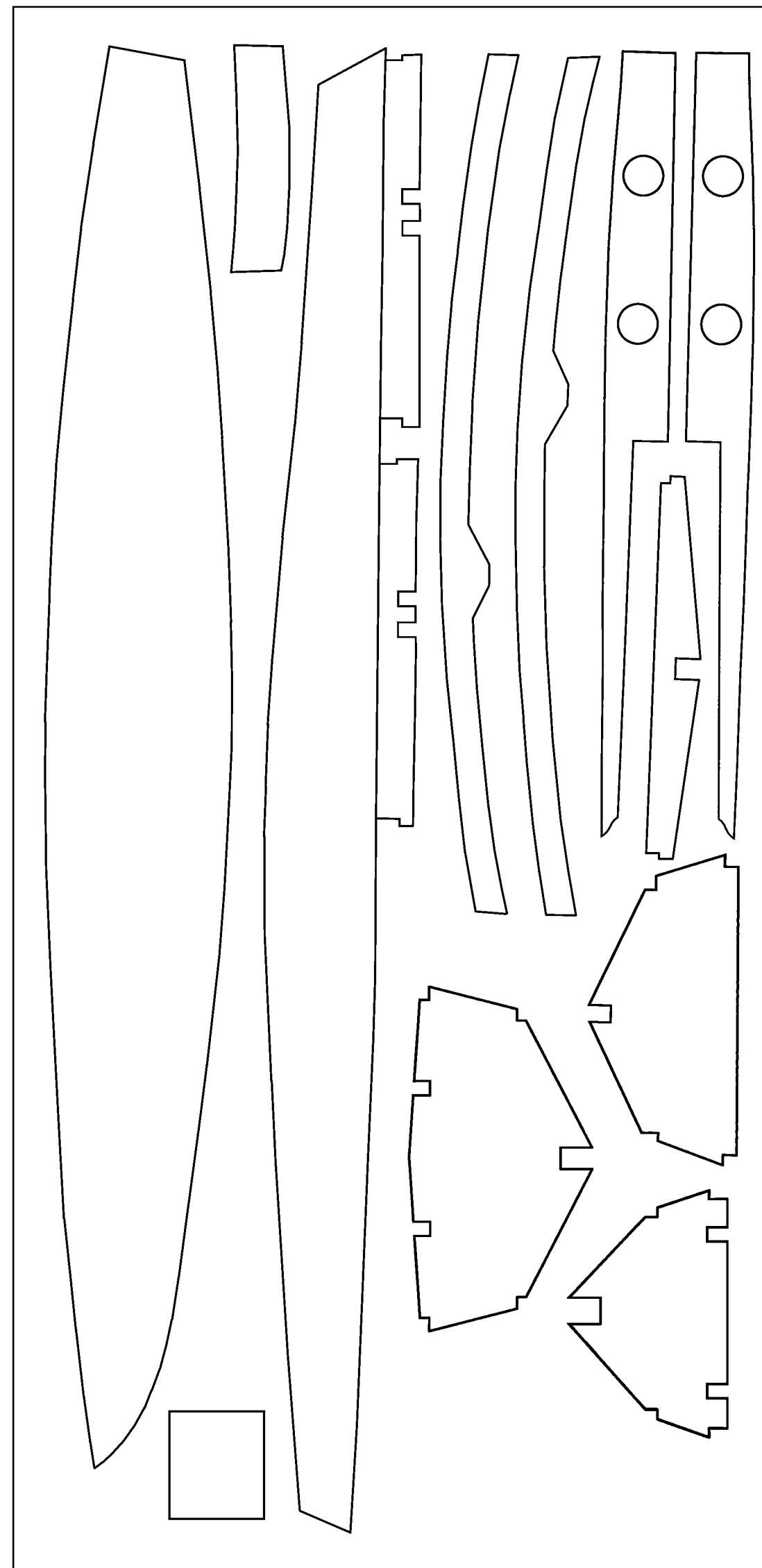
MAIN SHEET
SLIP KNOT
CELLULOID BEHIND PORTHOLES
MAINSTAY
JIB SHEET
THREAD LOOPED AROUND TRAVELER

WATERLINE
RUDDER
WIRE
SECTION THRU KEEL
TAPER END OF MAST
WEIGHT

STAND DETAIL
FRONT EDGE OF FIN KEEL GOES HERE

SAILING INSTRUCTIONS
ADJUST SAILS APPROXIMATELY AS SHOWN IN ABOVE SKETCH. BOAT SAILS WELL WITH WIND ABEAM OR A LITTLE FORWARD. SLIGHT ADJUSTMENTS MAY BE MADE TO DETERMINE BEST SAIL POSITION. NOTE THAT JIB HAS SLIGHTLY LESS ANGLE.

SLOOP "GYPSY JR."
LENGTH 10-3/4" KIT NO. J-2
DRAWN BY Robert Zimm



COMET
GYPSY SLOOP JUNIOR